

---

# Slingshot Graph Designer Guide

Slingshot Version 2

Document Version 1.03  
May 2002

---

**For more information contact:**

Swissrisk Financial Systems GmbH  
Technical Support  
Holzhausenstrasse 44  
D-60322 Frankfurt  
Germany

Phone +49 69 50952 111  
Fax: +49 69 50952 199  
Email [hotline@sr-financial-systems.com](mailto:hotline@sr-financial-systems.com)  
Website [www.sr-financial-systems.com](http://www.sr-financial-systems.com)

---

## Copyright Information

This document is protected by copyright law and may not be reproduced or distributed either in part or in total. The licensee is not allowed to pass on the software or the accompanying written materials to third parties or make them otherwise available without prior written agreement of the licensor. Information in this document that refers to possible product extensions or to available accessories is not legally binding, especially because the products are subject to continuous adaptation and because the information may also relate to future development. The contents of this document can change without prior notice and does not represent any legal obligation on the part of Swissrisk Financial Systems GmbH.

Swissrisk Financial Systems GmbH cannot be made liable for the correctness of information in this document nor for damages resulting from the use of this information or the impossibility of using this information. All other legal regulations for using the software and the corresponding documentation are set in the applicable license agreement.

**Slingshot** is a trademark of Swissrisk Financial Systems GmbH. All other product and company names mentioned in this manual are trademarks of their respective companies

### Published by:

Swissrisk Financial Systems GmbH  
Holzhausenstrasse 44  
D-60322 Frankfurt  
Germany

Phone: +49 69 50952-0  
Fax: +49 69 50952-333  
Website: [www.sr-financial-systems.com](http://www.sr-financial-systems.com)

Copyright © Swissrisk Financial Systems GmbH | All rights reserved

**Slingshot Graph Designer Guide**

**Introduction..... 1**

**Parameters..... 1**

**Interaction..... 2**

**Example HTML Code..... 3**

## Introduction

The Slingshot Graph Viewer is a special Viewer that was designed to allow trend graphs to be drawn in real time. The available parameters and details about how to interact with the Graph Viewer are available in this document.

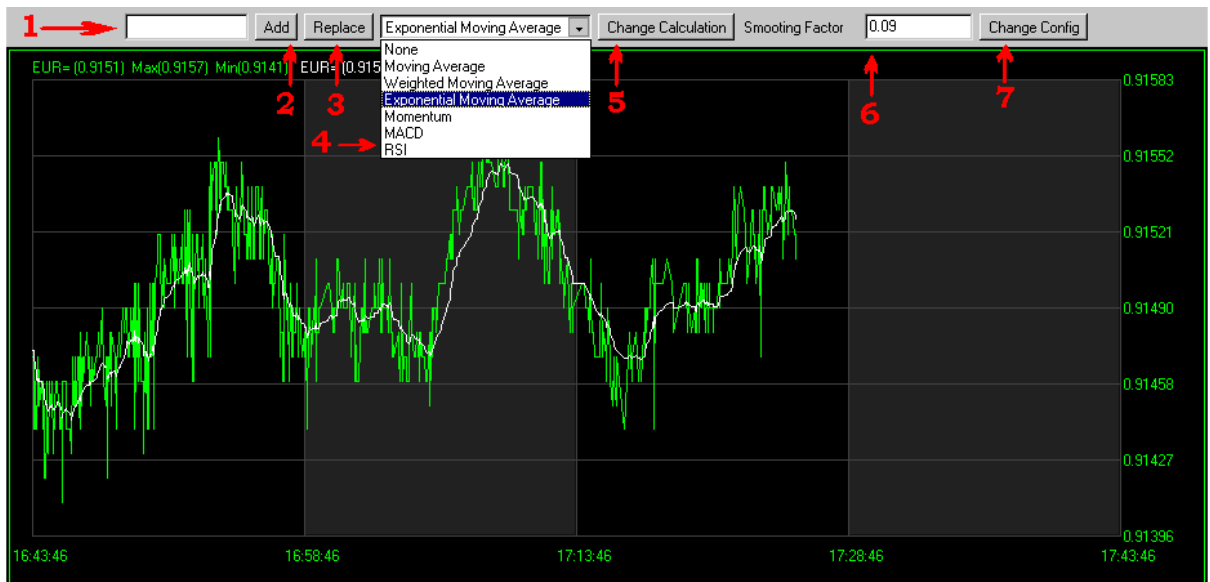
## Parameters

The Graph Viewer can be passed the following parameters from an HTML file. If a default value is available for the parameter it is displayed in brackets.

Parameter	Possible Values	Description
REQUESTER	URL's	The URL of the WDS ( <b>http://127/0/0/1:80</b> )
SERVICE	Text String	The name of the Service to request from ( <b>Reuters</b> )
OBJECT	Text String	A comma delimited string of the objects to request. There must be no spaces between object names( <b>EUR=</b> )
OBJECTCOLOURS	Text String	A comma delimited list of colour names or hex values that will be used by the objects.
CALCULATION	Text String	One of <ul style="list-style-type: none"> <li>• None (<b>Default</b>)</li> <li>• MovingAverage</li> <li>• WeightedMovingAverage</li> <li>• ExponentialMovingAverage</li> <li>• Momentum</li> <li>• MACD</li> <li>• RSI</li> </ul>
MAXPOINTS	Positive Integer	The maximum number of points to be displayed per graph object ( <b>1000</b> )
PRIMARYFID	Integer	The FID number to be plotted in the main graph ( <b>22</b> )
SECONDARYFID	Integer	The FID number to be plotted on the secondary graph ( <b>-1 = nothing</b> )
SECONDARYFIDNAME	Text String	The name to be displayed on the secondary graph ( <b>Volume</b> )
NOMERGE	Boolean – TRUE, YES, FALSE or No	Whether or not to switch off the merging of updates ( <b>FALSE</b> )
SHOWCONSOLE	Boolean – TRUE, YES, FALSE or No	Whether or not to display the control console ( <b>TRUE</b> )
AuthorisationID	Text String	The AuthorisationID to be passed to the WDS

## Interaction

It is possible to interact with the “Console” in the Graph Viewer if SHOWCONSOLE is not set to FALSE. This allows you to change the type of calculation performed, request a different object, or change the defaults of the selected calculation. We shall describe the possibilities available in Figure 1.1 from left to right.



**Figure 1.1**

In Figure 1.1:

1. This is the text box where you enter the name of any objects you wish to request.
2. Press the “Add” button to add the object name in text box 1 to your graph.
3. You can press the “Replace” button if you wish to replace **all** objects in your current graph with the object named in text box 1.
4. This list box contains the names of the Calculations available. It is not currently possible to change to any of the following three calculations unless you are in one of them already, “Momentum”, “MACD” or “RSI”.
5. The “Change Calculation” button must be pressed to actually change to the calculation you have specified in list box 4.
6. This text box contains the current value of any parameters that are editable in the current calculation. Its name is displayed on the left of this text box. In this case the changeable parameter name is “Smoothing Factor”.
7. The “Change Config” button must be pressed before any figures entered into text box 6 are passed to the current calculation.

## Example HTML Code

The following HTML code shows one possible use of the Graph Viewer applet. The class that must be called in all cases is "net.Slingshot.Graph.GraphComponent".

### Example

```
<HTML>
<BODY BGCOLOR=WHITE>
<APPLET CODEBASE="http://127.0.0.1" ARCHIVE="SLSAll.zip"
CODE="net.Slingshot.Graph.GraphComponent" WIDTH="100%" HEIGHT="451">
<PARAM NAME=Requester Value=http://127.0.0.1>
<PARAM NAME=Service Value=Reuters>
<PARAM NAME=MaxPoints VALUE=600>
<PARAM NAME=SHOWCONSOLE VALUE=TRUE>
</APPLET>

<HR>
The graph is above this text.
</BODY>
</HTML>
```